



Berecroft | | Harlow | CM18 7SB

£2,000

 clarknewman

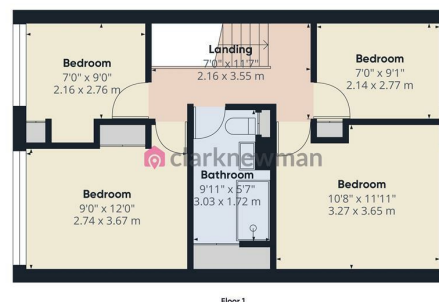
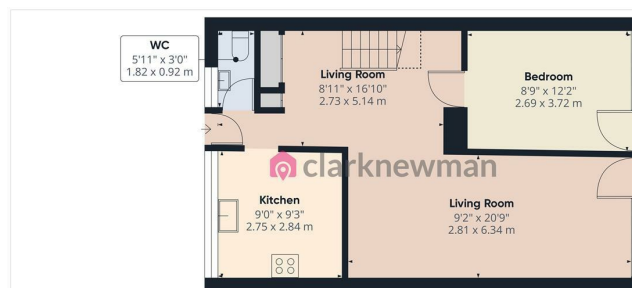
Berecroft |
Harlow | CM18 7SB
£2,000

A FIVE BEDROOM MID TERRACE HOUSE. The ground floor comprises of a large reception room with kitchen, WC and double bedroom. Upstairs includes a further two double bedrooms and two single bedrooms. There is also a new family bathroom suite (with shower/no bath). The property also benefits from gas heating via radiators and UPVC double glazed windows. The garden is laid to lawn with patio and shed. The property is available unfurnished late April. This is a non-smoking property.

- Five Bedrooms
- Available late April
- Council Tax Band: B
- Mid Terraced House
- Unfurnished
- EPC Rating: D

Front
Entrance Lobby
WC
5'11" x 3'0" (1.8 x 0.91)
Kitchen
8'11" x 8'10" (2.72 x 2.69)
Living Room
21'0" x 12'0" Max (6.4 x 3.66 Max)
Ground Floor Bedroom
12'2" x 8'7" (3.71 x 2.62)
Landing
Bedroom Two
12'3" x 8'11" (3.73 x 2.72)

Bedroom Three
11'10" x 11'0" (3.61 x 3.35)
Bedroom Four
8'8" x 7'0" (2.64 x 2.13)
Bedroom Five
9'0" x 6'11" (2.74 x 2.11)
Bathroom
9'7" x 5'6" (2.92 x 1.68)
Garden
35'0" Approx (10.67 Approx)
Agents Notes
Local Area



clarknewman

Approximate total area*

1039.7 ft²

96.59 m²

Reduced headroom

15.71 ft²

1.46 m²

(1) Excluding balconies and terraces

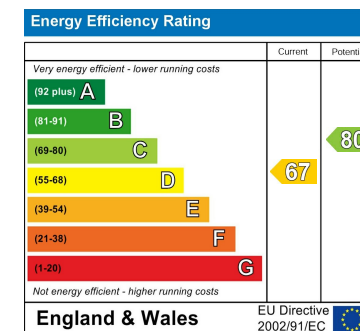
Reduced headroom

Below 5 ft/1.5 m

While every attempt has been made to ensure accuracy, all measurements are approximate, not to scale. This floor plan is for illustrative purposes only.

Calculations were based on RICS IPMS 3C standard. Please note that calculations were adjusted by a third party and therefore may not comply with RICS IPMS 3C.

GIRAFFE360



Equity House
4-6 Market Street
Harlow
Essex
CM17 0AH
01279 400444
hello@clarknewman.co.uk
www.clarknewman.co.uk